



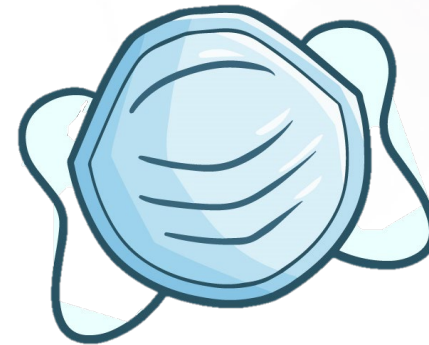
Penn Medicine

LONG TERM CARE | RISE

For Facilitator Use Only

Back to Basics: PPE

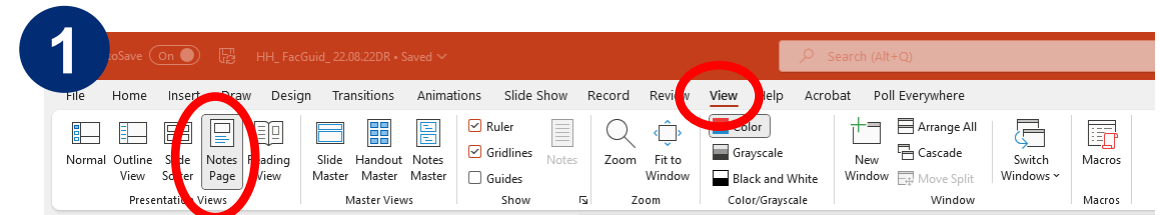
Facilitator Guide



How to Use This Facilitator’s Guide

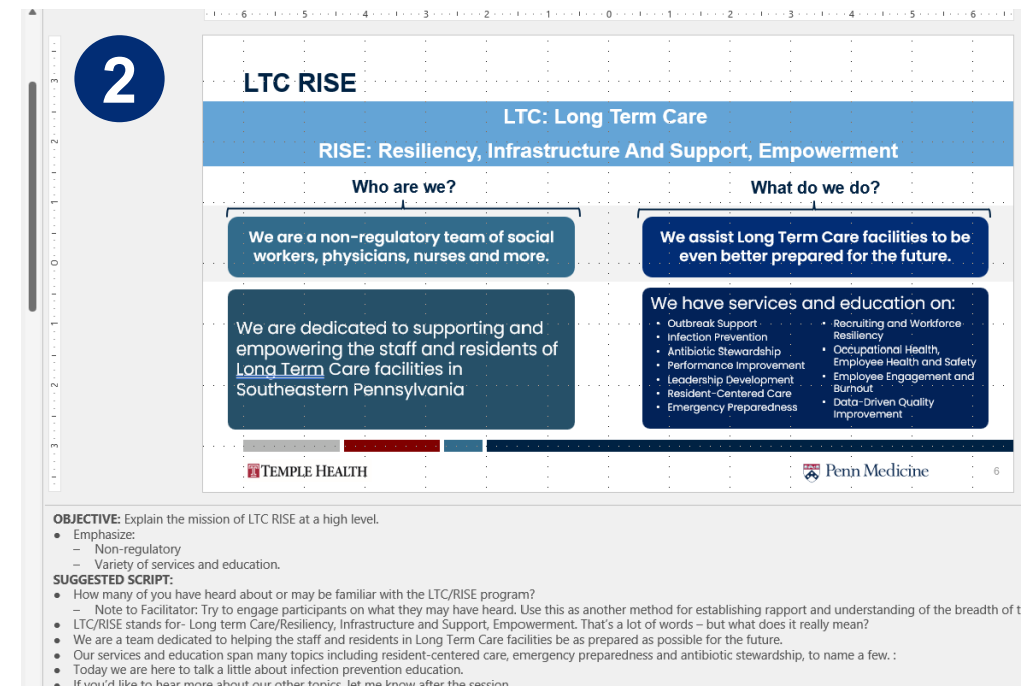
► **Printing out copies is not required.**

- If you can, bring a print out of:
 - Slide 4 (session sign)
- You may want to print out the presentation for your own use. We recommend using Notes View (see picture 1)
- If you can’t print anything out – no worries! You can view the notes on your phone or laptop.



► Each slide has a guide in the notes section.

- You can see guide at the bottom of slides (see picture 2) or note view
- Each slide has an “Objective”. This is the main point you want to make sure participants understand.
- There are “Facilitator Notes” throughout the Suggested Scripts. These are tips, or question answers for you as facilitator to use.



Before Your Meeting

Schedule Presentation

- Confirm a date and time for presentation
- Communicate:
 - Presentation is for all staff and residents
 - The session will be 30 minutes
 - A separate room or space is preferred

Prepare for Presentation

- Gather Materials
 - Pens
 - Sign in sheet
 - Gloves
 - Masks
 - Gowns
 - Goggles
 - Face Shields
 - Optional:* Printed slides
 - Optional:* Paint-safe tape
 - Optional:* Print out of notes pages of presentation

Set up Presentation

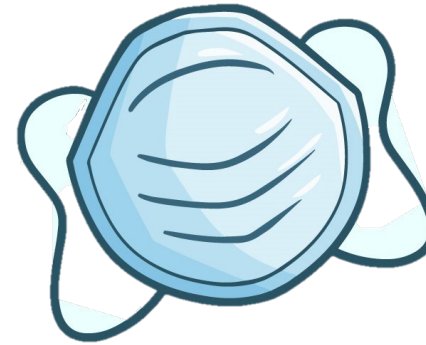
- Set up space:
 - Clean workspace
 - Space chairs appropriately
 - Optional:* Display session sign
- Set up PPE demonstration tables

Welcome

to the

Session on

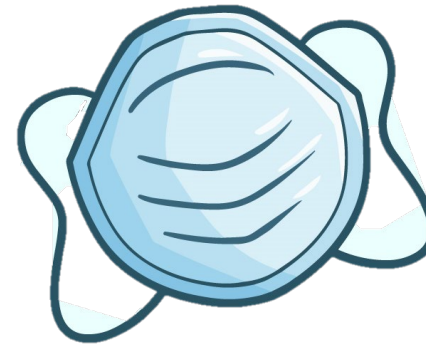
Back to Basics: PPE





What is PPE? Why do we wear it?

- ▶ PPE (Personal Protective Equipment) is specialized clothing/equipment worn by an employee for protection against infectious materials
- ▶ Personnel safety is improved in the healthcare environment through appropriate use of PPE



PPE Types

What?	Gloves 	Gowns 	Masks 	Goggles 	Face Shield 
Why?	Protect hands	Protect skin and clothing	Protect mouth and nose	Protect eyes	Protect face, mouth, nose, eyes
When?	Use when touching blood, body fluids, secretions, excretions, mucus membranes, non-intact skin and contaminated items	Use during procedures and patient care when you anticipate contact with blood, body fluids, secretions, or excretions on clothing or exposed skin	Use during patient care activities likely to generate splashes or sprays of blood, body fluids, secretions or excretions	Use during patient care activities likely to generate splashes or sprays of blood, body fluids, secretions or excretions	Use during patient care activities likely to generate splashes or sprays of blood, body fluids, secretions or excretions
How?	<ul style="list-style-type: none"> • Work from clean-dirty • Don't touch face • Avoid touching environmental surfaces • Change gloves whenever soiled, between patients • Never wash or reuse 		<ul style="list-style-type: none"> • Fully cover nose and mouth 	<ul style="list-style-type: none"> • Fit snugly over and around eye • Personal glasses are NOT a substitute for goggles 	<ul style="list-style-type: none"> • Cover forehead, extend below chin, and wrap around side of face

Precautions

Standard Precautions

- Previously called universal precautions
- Assumes any blood and body fluid of ANY patient could be infectious

PPE to Use When Implementing...

Contact Precautions

Example Infections:
MRSA, C. Diff



Gown



Gloves

Droplet Precautions

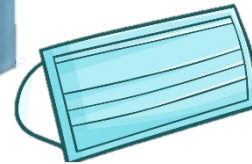
Example Infections:
Influenza, RSV



Gown



Gloves



Surgical masks within 3 feet of patient

Airborne Precautions

Example Infection:
Tuberculosis



Gown



Gloves



Respirator

Donning and Doffing PPE

- ▶ Put on(**Don**) before contact with patient, preferably before entering the room
- ▶ Remove(**Doff**) and discard at doorway or immediately outside patient room

Donning Order



Gown



Mask



Goggles / Face Shield



Gloves

FIRST

LAST



Gloves



Goggles / Face Shield



Gown



Mask

Doffing Order

Reminder: Contaminated areas (outside front) vs. Clean areas (inside / no contact with organisms)

Cleaning Goggles and Face Shields

- ▶ Always adhere to recommended manufacturer instructions for cleaning and disinfection
- ▶ When manufacturer instructions for cleaning and disinfection are unavailable, such as for single use disposable face shields or goggles, consider:
 1. While wearing a clean pair of gloves, carefully wipe the **inside, followed by the outside** of the face shield or goggles using a clean cloth saturated with *neutral* detergent solution or cleaner wipe.
 2. Carefully wipe the **outside** of the face shield or goggles using a wipe or clean cloth saturated with *EPA List N approved hospital disinfectant* solution.
 3. Wipe the **outside** of face shield or goggles with *clean water or alcohol* to remove residue.
 4. Fully dry (air dry or use clean absorbent towels).
 5. Remove gloves and perform hand hygiene.
 6. Cleaned and disinfected eye protection can be stored onsite, in a designated clean area within the facility.

Demonstration

▶ One Presenter

- Don and doff the PPE components in the correct order
- Make sure to call out which part of PPE you are putting on/taking off
- Explain why you put on that piece of PPE the way you do and in the order you are using.

▶ Multiple Presenters

- Set up 4 stations with one type of PPE each (gloves, masks, gowns, goggles / face shields)
- Have participants rotate between tables to review and show you the correct way to put on and take off that piece of equipment



THANK YOU