

Welcome

to the

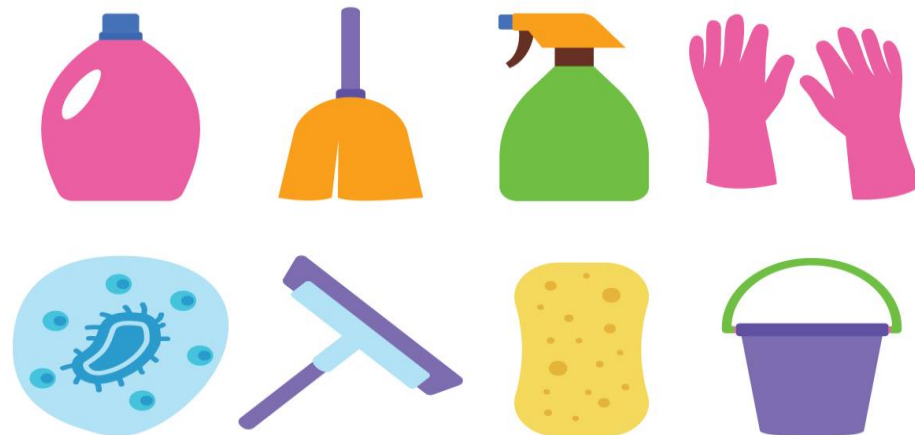
Long Term Care **RISE**

 Penn Medicine |  TEMPLE HEALTH

Session on

Cleaning and Disinfecting

High Touch Surfaces





Cleaning Frequency and Importance in Healthcare

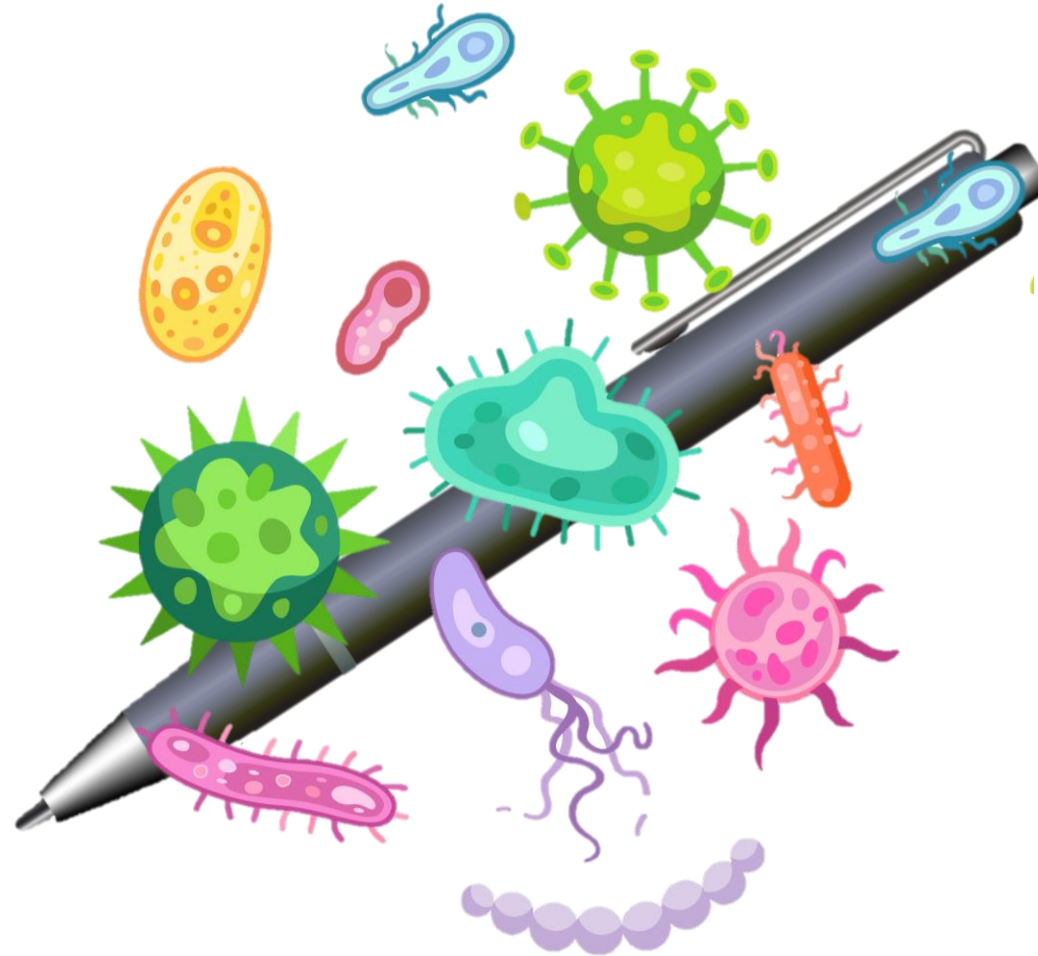


- **Daily:** High touch surfaces
- **Between Uses:** Shared equipment
- **Cleaned and disinfected often:** Items that are often dirty and germ-laden



- Reducing the germs in our environment can help **prevent infection and illness.**
- Some residents may be ill or have **weak immune systems.**
- Some residents may have conditions that make **it easier for infections to grow.**

Germs... Germs... They are Everywhere!



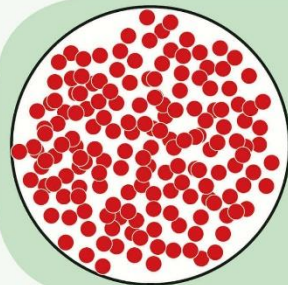
Cleaning & Disinfection: What's the Difference?



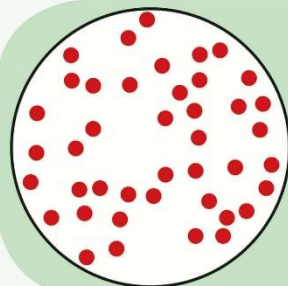
VS.



Cleaning / disinfection

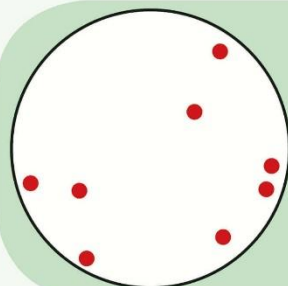


Untreated surface



Cleaning

- ▶ Visual cleanliness
- ▶ Germ reduction 10 – 90 %



Disinfection

- ▶ Germ reduction 99.999 %

HIGH TOUCH



LOW TOUCH

“Contact” Time

- Amount of time a disinfectant needs to sit visibly wet on a surface, without being wiped away or disturbed, to effectively kill germs
- Sometimes called “dwell time” or “wet time”
- Different germs may have different contact times

What is the contact time for the disinfectant in your facility?

How to Read a Disinfectant Label

Read the entire label.

The label is the law!

Note: Below is an **example** of information that can be found on a disinfectant label

Active Ingredients:
What are the main disinfecting chemicals?

ACTIVE INGREDIENTS:
Alkyl (60% C14, 30% C16, 5% C12, 5% C18)
Dimethyl Benzyl Ammonium Chloride10.0%
OTHER INGREDIENTS:90.0%
TOTAL:100.0%

EPA Registration Number:
U.S. laws require that all disinfectants be registered with EPA.

EPA REG NO. 55555-55-55555

Signal Words (Caution, Warning, Danger):
How risky is this disinfectant if it is swallowed, inhaled, or absorbed through the skin?

CAUTION

Directions for Use (Instructions for Use):
Where should the disinfectant be used?

Directions for Use

INSTRUCTIONS FOR USE:
It is a violation of Federal law to use this product in a manner inconsistent with its labeling.

What germs does the disinfectant kill?

For Disinfection of Healthcare Organisms:
Staphylococcus aureus,
Pseudomonas aeruginosa.

What types of surfaces can the disinfectant be used on?

To Disinfect Hard, Nonporous Surfaces:
Pre-wash surface.
Mop or wipe with disinfectant solution.
Allow solution to stay wet on surface for at least 10 minutes.
Rinse well and air dry.

How do I properly use the disinfectant?

Contact Time:
How long does the surface have to stay wet with the disinfectant to kill germs?

PRECAUTIONARY STATEMENTS:
Hazardous to humans and domestic animals. Wear gloves and eye protection.

Precautionary Statements:
How do I use this disinfectant safely? Do I need PPE?

CAUSES MODERATE EYE IRRITATION. Avoid contact with eyes, skin or clothing. Wash thoroughly with soap and water after handling. Avoid contact with foods.

First Aid:
What should I do if I get the disinfectant in my eyes or mouth, on my skin, or if I breathe it in?

FIRST AID: IF IN EYES: Hold eye open and rinse slowly and gently with water for 15-20 minutes. Remove contact lenses, if present, after the first 5 minutes, then continue rinsing eye.
IF ON SKIN OR CLOTHING: Take off contaminated clothing. Rinse skin immediately with plenty of water for 15-20 minutes.

Storage & Disposal:
How should the disinfectant be stored? How should I dispose of expired disinfectant? What should I do with the container?

POISON CONTROL: Call a Poison Control Center (1-866-366-5048) or doctor for treatment advice.

STORAGE AND DISPOSAL: Store this product in a cool, dry area away from direct sunlight and heat. When not in use keep center cap of lid closed to prevent moisture loss. Nonrefillable container. Do not reuse or refill this container.

EXP MM-DD-YYYY
5 55555 55555 5



U.S. Department of Health and Human Services
Centers for Disease Control and Prevention



WWW.CDC.GOV/PROJECTFIRSTLINE

6 Steps for Safe and Effective Disinfectant Use

Step 2: **Read** the directions

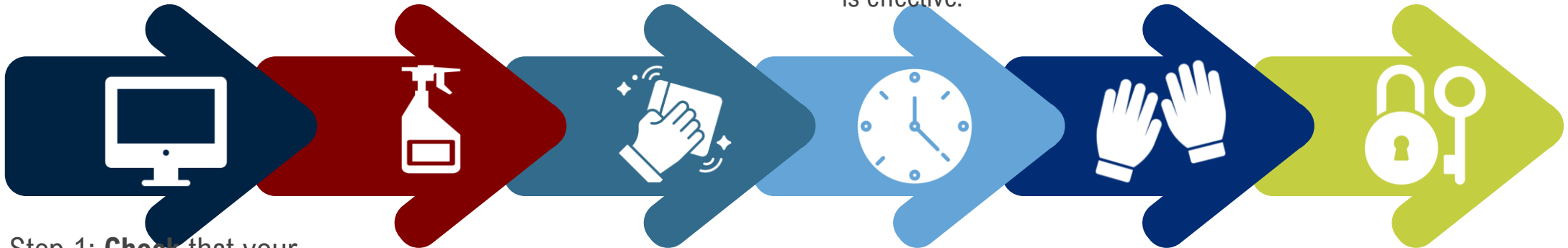
Follow the product's directions. Check "use sites" and "surface types" to see where you can use the product. Read the "precautionary statements".

Step 4: **Follow** the contact / dwell / wet time

You can find the contact / dwell / wet time in the directions. The surface should remain wet the whole time to ensure the product is effective.

Step 6: **Lock** it up

Keep lids tightly closed and store out of reach of children.



Step 1: **Check** that your product is EPA-registered and covers any specific germs of concern in your facility

Find the EPA registration number on the product. Then, check to see if it is on EPA's list of approved disinfectants

Step 3: **Pre-clean** the surface

Make sure to wash the surface with soap and water if the directions mention pre-cleaning or if the surface is visibly dirty.

Step 5: **Wear** gloves and wash your hands

For disposable gloves, discard them after each cleaning. For reusable gloves. Wash your hands after removing the gloves.

QUIZ!



THANK YOU