

Medical/Clinical Program Offerings

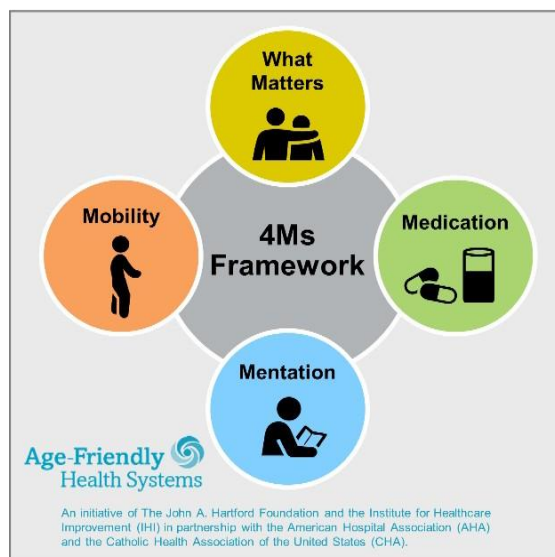
The RISE Medical/Clinical team offers a variety of individualized, Person-Centered medical/clinical education modules to support your community in promoting quality outcomes and resiliency.

These 30-minute modules are designed to meet the educational needs of LTC teams to improve resident outcomes, satisfaction, and community well-being.

Modules include:

- ✓ Advanced Care Planning
- ✓ Heart Failure Identification of Signs and Symptoms
- ✓ Sepsis Early Identification of Signs and Symptoms
- ✓ Hemodialysis Chair Education
- ✓ Heal Related Illness
- ✓ UTI Management
- ✓ Handoff Report
- ✓ Respiratory Management
- ✓ Respiratory Assessment Basics
- ✓ Enteral Device Management
- ✓ HIV Care
- ✓ Medication reconciliation
- ✓ SBAR Report
- ✓ Purposeful Rounding
- ✓ Falls Interactive Experience

Many of these modules involve the Institute for Healthcare Improvement (IHI)'s 4M-framework and their importance for Age-Friendly Health Care.



For related work, this graphic may be used in its entirety without requesting permission. Graphic files and guidance at ihi.org/AgeFriendly

What Matters

Know and align care with each older adult's specific health outcome goals and care preferences including, but not limited to, end-of-life care, and across settings of care.

Medication

If medication is necessary, use Age-Friendly medication that does not interfere with What Matters to the older adult, Mobility, or Mentation across settings of care.

Mentation

Prevent, identify, treat, and manage dementia, depression, and delirium across settings of care.

Mobility

Ensure that older adults move safely every day in order to maintain function and do What Matters.

*For additional information,
Please contact your Long-Term Care RISE partner
or
the LTC RISE 24/7 Call Center at (215) 707-1300*

Long Term Care RISE

 Penn Medicine |  TEMPLE HEALTH